

**TAMAGOTCHI CHARACTER CAN DIE**

Tamagotchi character will die if you did not take care of it, did not help it when it was sick, or naturally because of old age.



When Tamagotchi character dies, you will see a grave screen.



After grieving for your Tamagotchi character, press the A button while holding down the C button, and a new egg will appear and Tamagotchi character will be born in about a minute.

**4 CLOCK**

- **WHEN YOU WANT TO SEE CLOCK**  
Press B button when you see Tamagotchi character in the screen. And press B button again to go back to the screen.
- **WHEN YOU WANT TO SET CLOCK**  
Press and hold C button and press A button when you see clock in the screen. See section 2 **SET CLOCK**.

**5 SOUND ON / OFF**

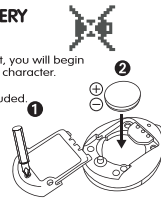
- Press and hold C button and press A button when you see Tamagotchi character in the screen.
- You cannot change sound if you need to take care of Tamagotchi character.
- Please be careful if you set OFF for sound, you will not hear Tamagotchi character's warning (calling) sounds.



**6 CHANGING BATTERY**

NOTE: when battery dies and restart, you will begin again with birth of your Tamagotchi character.

1. Using a screwdriver, remove the bottom of the device. Battery included. Adult assembly required.
2. Take out old battery, place new battery CR2032 (3V) x 1 with making sure (+) (-) directions.
3. Close battery box lid, please do "RESET" again.



- Please also "RESET" when you can not play completely or see something wrong on the screen.

**⚠ WARNING:** This product contains a Button or Coin Cell Battery. A swallowed Button or Coin Cell Battery can cause internal chemical burns in as little as two hours and lead to death. Dispose of used batteries immediately. Keep new and used batteries away from children. If you think batteries might have been swallowed or placed inside any part of the body, seek immediate medical attention.

Parents and guardians: Please read this entire instruction sheet before allowing children to play.

**DISCLAIMER**

**⚠ WARNING:** Changes or modifications to this unit not expressly approved by the party responsible for compliance could void the user's authority to operate the equipment. **NOTE:** This equipment has been tested and found to comply with the limits for a Class B digital device, pursuant to Part 15 of the FCC Rules. These limits are designed to provide reasonable protection against harmful interference in a residential installation. This equipment generates uses and can radiate radio frequency energy and, if not installed and used in accordance with the instructions, may cause harmful interference to radio communications. However, there is no guarantee that interference will not occur in a particular installation. If this equipment does cause harmful interference to radio or television reception, which can be determined by turning the equipment off and on, the user is encouraged to try to correct the interference by one of more of the following measures- Reorient or relocate the receiving antenna. Increase the separation between the equipment and receiver. Connect the equipment into an outlet on a circuit different from that to which the receiver is connected. Consult the dealer or an experienced radio TV/technician for help. This device complies with Part 15 of the FCC Rules. Operation is subject to the following two conditions: (1) this device may not cause harmful interference, and (2) this device must accept any interference received, including interference that may cause undesired operation.

**⚠ WARNING: CHOKING HAZARD- Small parts. Not for children under 3 years.**

**⚠ CAUTION: PLEASE READ BEFORE PLAYING WITH TOY**

- Do not: 1) aim toy at anyone, 2) hit anyone with toy, 3) poke anyone with toy, 4) swing toy at anyone, 5) step on toy.

**⚠ CAUTION:** Keep batteries away from children. Batteries may be harmful if swallowed. Remove and dispose of used or exhausted batteries properly. Remove batteries when not in use or discharged. Non-rechargeable batteries are not to be recharged. Rechargeable batteries are to be removed from the toy before being charged; rechargeable batteries are only to be charged under adult supervision. Batteries are to be inserted with the correct polarity; the supply terminals are not to be short-circuited.

Distributed by Bandai America Incorporated, 2120 Park Place, Suite 120, El Segundo, California 90245. Bandai logo: ® and © 2017 Bandai. TAMAGOTCHI and all related logos, names and distinctive likenesses are the exclusive property of Bandai. © BANDAI, WIZ. All Rights Reserved.

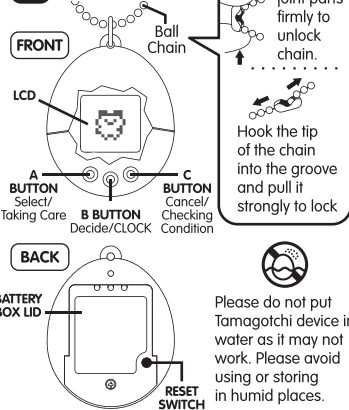
TAMAGOTCHI™



Instruction Sheet

8+  
ASST.  
#41800  
#41798  
#41799

**1 MAIN UNIT INSTRUCTION**



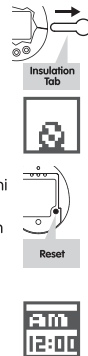
Pinch the joint parts firmly to unlock chain.

Hook the tip of the chain into the groove and pull it strongly to lock

Please do not put Tamagotchi device in water as it may not work. Please avoid using or storing in humid places.

**2 BIRTH OF TAMAGOTCHI**

1. **PULL OUT** the insulation tab from side of Tamagotchi device. You will see an egg on the screen with sound.
2. **RESET** If necessary, press the reset switch on the back of the Tamagotchi device with a thin rod. Please do not press the reset switch strongly with a sharp rod, you may damage the Tamagotchi device.
3. **SET CLOCK** when hour is flashing, press A button to increase number to correct hour. Press B button to decide. When minute is flashing, press A button to increase number to correct time. Press B button to decide to change the time. Press the C button to return to the previous selection.



- TAMAGOTCHI CHARACTER WILL NOT BE BORN UNLESS YOU SET THE CLOCK!!!
- AM IN THE MORNING AND PM IN THE AFTERNOON. PLEASE BE CAREFUL NOT TO MAKE A MISTAKE!

4. **TAMAGOTCHI CHARACTER BIRTH**  
When the clock is set, you return to the Tamagotchi device display screen. Tamagotchi character is born in about a minute.

**TAMAGOTCHI CHARACTER GROWTH**

Tamagotchi character grows while transforming into various characters. Individually varies with characters. How you take care of your Tamagotchi character will decide which character it will be.



**3 HOW TO TAKE CARE**

**CALL**

When Tamagotchi character calls, please press the A button and take care of it. If you do not notice the call, you can find out if you need to take care of it by pushing the C button. After taking care of it, the C button cannot be operated until the next call.



**FOOD**

If Tamagotchi character is hungry, press the A button to select rice or candy. From the selection screen with the A button, and use the B button to decide.

**SNACK**

If Tamagotchi character is in a bad mood, press the A button, select Candy. From the selection screen with the A button, and decide with the B button. The Tamagotchi character will not eat when Tamagotchi character is full. You can not select food/snack by pressing the A button when you see poop, when Tamagotchi character is asleep, when Tamagotchi character is sick, or when Tamagotchi character is dying.



**Poop**

When Tamagotchi character makes poop, push the A button to clean it up. You can not clean it up if you do not see poop, when Tamagotchi character is asleep, or when Tamagotchi character is dying.



**LIGHT**

When Tamagotchi character sleeps, press the A button, select OFF from the selection screen with the A button, decide with the B button to turn off the light. When Tamagotchi character sleeps, only ON/OFF of light, ON/OFF of sound, and clock display operations can be performed. You can not turn the light ON/OFF when Tamagotchi character is awake.



**SICK**

Your Tamagotchi character is sick if the skull mark appears. Please press the A button repeatedly until the skull mark disappears. Be careful as it will die if it is sick for a long time. If you can not cure it, you can not do operations other than checking the time and turning sound ON/OFF.

